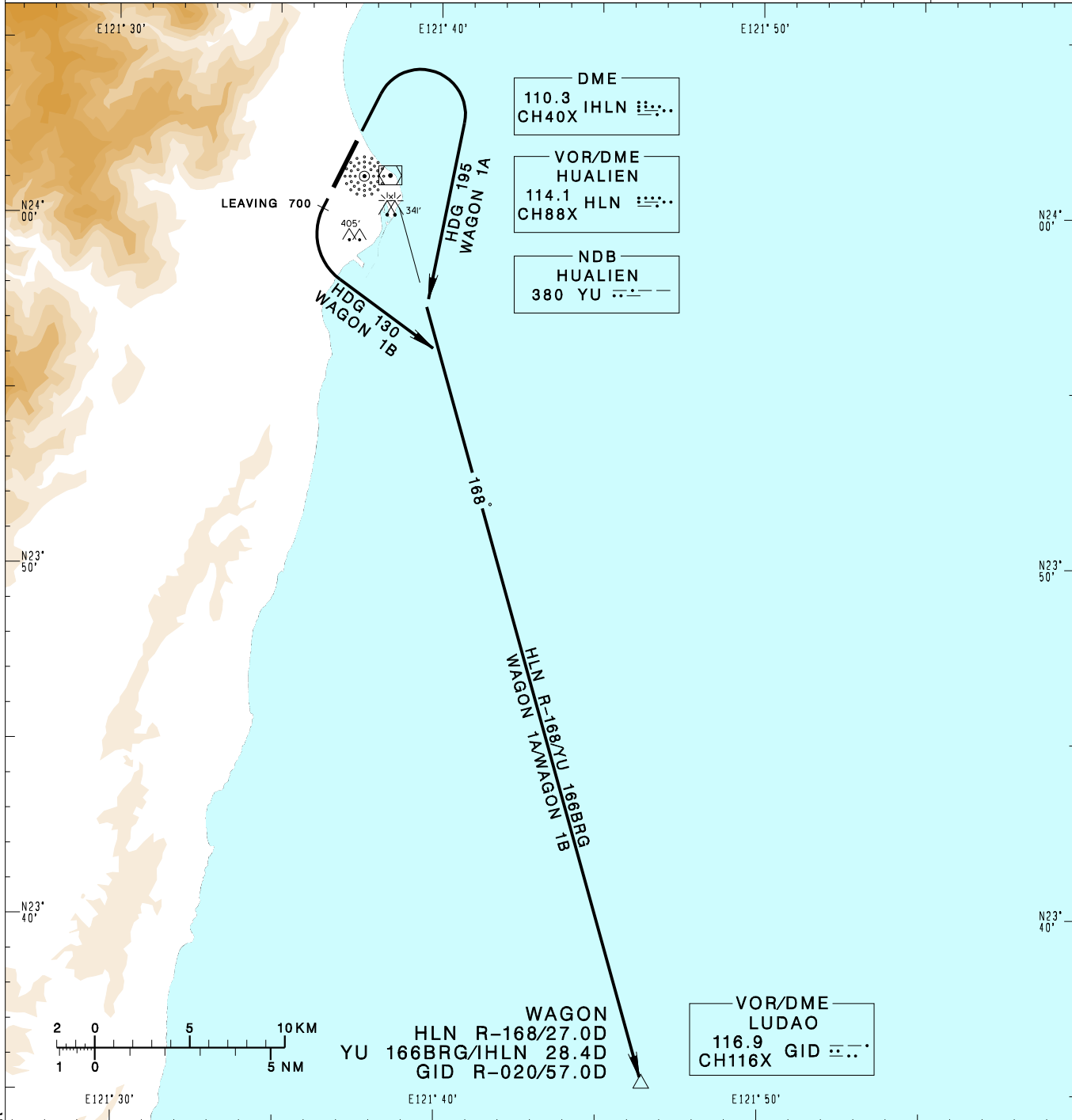


**花蓮機場**  
HUALIEN AD

RCYU SID  
WAGON 1A(RWY03)  
WAGON 1B(RWY21)

TAIPEI APP 124.0 119.1 330.2 276.8		HUALIEN TWR 118.1 126.18 236.6		VAR 4°W 	MSA HLN VOR 25NM		
Apt Elev: 51'		Trans Level: FL130				Trans Alt: 11,000'	
BEARINGS ARE MAGNETIC; DISTANCES ARE NAUTICAL MILES; ELEVATIONS, HEIGHTS IN FEET							



**WAGON ONE ALFA DEPARTURE**  
After departure, turn right HDG 195 to track HLN R-168 /YU 166BRG to WAGON to join B591.

**WAGON ONE BRAVO DEPARTURE**  
Depart RWY HDG until leaving 700ft, turn left HDG 130 to track HLN R-168 /YU 166BRG to WAGON to join B591.

- NOTE**
1. WAGON 1B: Requires a minimum climb gradient of 5% (305ft/NM) until 2000ft.
  2. Caution high terrain west of the airport.
  3. A 341ft MSL stack at 1.52NM EAST of THR03.
  4. A 405ft MSL tree at 1.18NM SE of THR03.

CHANGES: NEW PAGE NUMBER